



BASED ON LOVEISRESPECT CONTACTS DOCUMENTED JANUARY–JUNE 2017

Loveisrespect provides crisis intervention, safety-planning, referrals and DV and healthy relationship education. From January to June 2017, loveisrespect answered **36,951 contacts**. Of the contacts answered, nearly **35%** of the callers, chatters or texters disclosed a location in the U.S. and U.S. territories. The remainder of this report reflects only those documented contacts*.



6,523
CALLS



4,713
CHATS

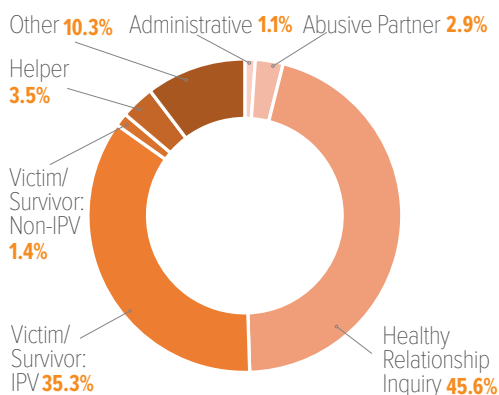


1,573
TEXTS

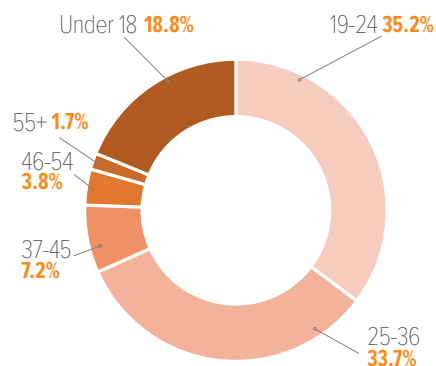


12,810
TOTAL

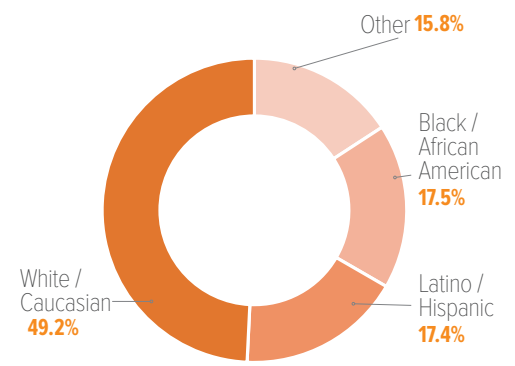
WHO IS CONTACTING LOVEISRESPECT



CONTACT TYPE



VICTIM AGE



CONTACT ETHNICITY

CALLER TYPE DEFINITIONS

VICTIM/SURVIVOR: IPV (INTIMATE PARTNER VIOLENCE) – A victim or survivor of abuse from his/her partner or spouse.

VICTIM/SURVIVOR: NON-IPV – A victim or survivor of abuse by anyone else: parent, sibling, caregiver, etc.

HELPER – A caller reaching out to help another including: family/friend, service provider, law enforcement, medical/health, religious leader/program or teacher.

HEALTHY RELATIONSHIP INQUIRY – Anyone with questions about healthy relationships, where no abuse is present.

ADMINISTRATIVE – Someone seeking basic information, rather than advocacy.

ABUSIVE PARTNER – A caller who identifies as abusive or who an Advocate believes to be an abusive partner.

OTHER – Any caller about whom an Advocate is able to gather info, but who does not fit into an above category; this includes off target callers, non-DV calls, hang-ups, prank calls and feedback.

TOP 10 CITIES IN CONTACT VOLUME

1. CALIFORNIA	16.9%	7. OHIO	3.3%
2. TEXAS	9.1%	8. GEORGIA	3.2%
3. NEW YORK	8.1%	9. NEW JERSEY	3.0%
4. FLORIDA	6.6%	10. WASHINGTON	2.7%
5. ILLINOIS	4.6%		
6. PENNSYLVANIA	3.4%		

TOTAL 60.2%

CHAT: 24/7/365 · CALL: 1.866.331.9474 · TEXT: LOVEIS TO 22522

FOR MORE INFORMATION, VISIT WWW.LOVEISRESPECT.ORG



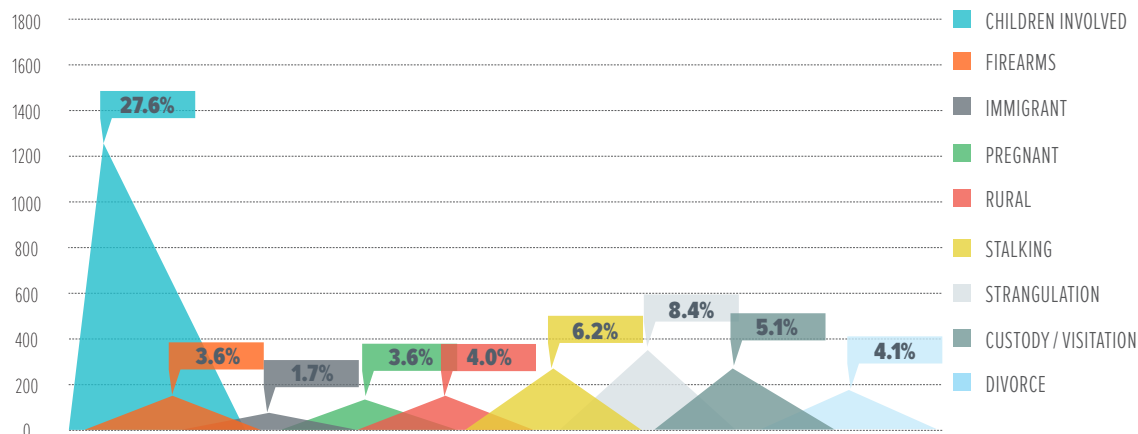
*Documented contacts refers to the calls, online chats or TTY calls, and Texts where a location was self-disclosed by the contact.



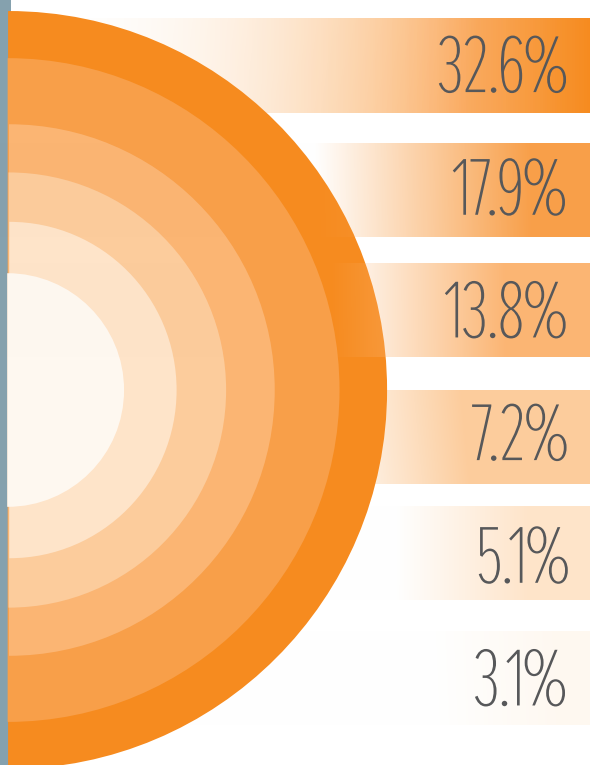
This project described was supported by Grant Number 90EV0426 from the Administration on Children, Youth and Families, Family and Youth Services Bureau, U.S. Department of Health and Human Services. The opinions, findings, conclusions and recommendations expressed in this publication are those of the author(s) and do not necessarily reflect the views of the Administration on Children, Youth and Families, Family and Youth Services Bureau, U.S. Department of Health and Human Services.



MOST COMMON DISCLOSED SPECIAL FACTORS

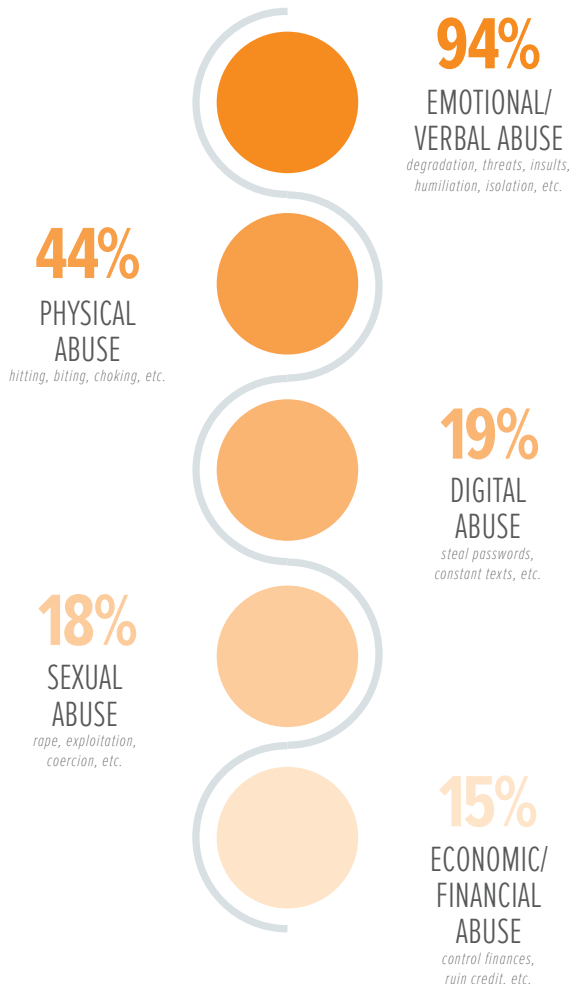


WHAT DO VICTIMS NEED



- 1775 Individual Professional Counseling
- 975 Domestic Violence Support Groups
- 750 Legal Advocacy
- 394 Domestic Violence Shelter
- 277 Protective/Restraining Order Assistance
- 172 Legal Representation

WHAT ARE VICTIMS EXPERIENCING



TOP RESOURCE REFERRALS

Scarleteen
GoodTherapy.org
Womenslaw.org
211 - United Way
Your Life Your Voice
(Boys Town)

14,243

REFERRALS TO SERVICE PROVIDERS

1,116

OFFERS TO DIRECT CONNECT

15,271

REFERRALS TO OTHER RESOURCES

LOVEISRESPECT.ORG

loveisrespect.org is a comprehensive online resource for teens and young adults affected by dating abuse.

New Visitors Jan. - June 2017:

1,741,801

Visits Jan. - June 2017:

2,105,539

MOST VIEWED PAGES ON LOVEISRESPECT.ORG IN 2017

Is My Relationship Healthy? Quiz
Types of Abuse
Healthy Relationships
Am I A Good Partner? Quiz
How Can We Communicate Better?
Building Trust After Cheating